

**RLG CONSULTING ENGINEERS**  
12001 N. CENTRAL EXPRESSWAY #300 DALLAS, TX 75243  
WWW.RLGINC.COM TBPE FIRM REG. F-493

**EXHIBIT A1—PROPOSED SIGN AMENDMENT**  
SPECIAL SIGN DISTRICT  
SOUTHERN METHODIST UNIVERSITY  
AUGUST 17, 2023

## Existing:

- ① CAMPUS ENTRY SIGN, SE CORNER OF DANIEL AVE AND HILLCREST AVE  
ORD. 94/10
- ② CAMPUS ENTRY SIGN, DYER ST AND HILLCREST AVE  
ORD. 94/10
- ③ CAMPUS ENTRY SIGN, NE CORNER OF UNIVERSITY BLVD AND HILLCREST AVE  
ORD. 94/10
- ④ CAMPUS ENTRY SIGN, SE CORNER OF UNIVERSITY BLVD AND HILLCREST AVE  
ORD. 94/10
- ⑤ CAMPUS ENTRY SIGN, NE CORNER OF BISHOP BLVD AND MOCKINGBIRD LN  
ORD. 00/40
- ⑥ WESTCOTT FIELD SCOREBOARD  
ORD. 01/26
- ⑦ CAMPUS ENTRY SIGN, NE CORNER OF UNIVERSITY BLVD AND HILLCREST AVE  
ORD. 02/30
- ⑧ PARKING LOT SIGNAGE NEAR STOREY HALL LOT ACCESS FROM DANIEL AVE  
ORD. 02/30
- ⑨ CAMPUS ENTRY SIGN, SW CORNER OF DANIEL AVE AND AIRLINE RD  
ORD. 14/008
- ⑩ CAMPUS ENTRY SIGN, NW CORNER OF BUSH AVE AND SMU BLVD  
ORD. 14/008
- ⑪ CAMPUS ENTRY SIGN, SW CORNER OF BUSH AVE AND SMU BLVD  
ORD. 14/008
- ⑫ CAMPUS ENTRY SIGN, NW CORNER OF US HWY 75 AND MOCKINGBIRD LN  
ORD. 14/008
- ⑬ CAMPUS ENTRY SIGN, NW CORNER OF BUSH AVE AND MOCKINGBIRD LN  
ORD. 14/008
- ⑭ FIELD LEVEL VIDEO BOARDS, NORTH END OF FORD STADIUM  
ORD. 19/007
- ⑮ FIELD LEVEL VIDEO BOARDS, SOUTH END OF FORD STADIUM  
ORD. 19/007
- ⑯ PARKING GARAGE ENTRY SIGN, SE CORNER OF NORMANDY AVE AND HILLCREST AVE. ORD. 19/007
- ⑰ PARKING GARAGE ENTRY SIGN, SE CORNER OF NORMANDY AVE AND HILLCREST AVE. ORD. 19/007
- ⑱ PARKING GARAGE ENTRY SIGN, NE CORNER OF NORMANDY AVE AND HILLCREST AVE. ORD. 19/007
- ⑲ PARKING LOT U1 ENTRY SIGN, MID-BLOCK ON THE SOUTH SIDE OF UNIVERSITY BLVD BETWEEN AIRLINE RD AND DUBLIN ST. ORD. 22/029
- ⑳ PARKING LOT U2 ENTRY SIGN, MID-BLOCK ON THE NORTH SIDE OF McFARLIN BLVD BETWEEN AIRLINE RD AND DUBLIN ST. ORD. 22/029

- ㉑ FORD STADIUM SCORE BOARD, NEAR MID-BUILDING ON THE NORTH END OF THE STADIUM FACING SOUTH. ORD. 22/029
- ㉒ FORD STADIUM SCORE BOARD, NEAR MID-BUILDING ON THE SOUTH END OF THE STADIUM FACING NORTH. ORD. 22/029
- ㉓ CAMPUS ENTRY MONUMENT SIGN, SW CORNER OF INTERSECTION AT UNIVERSITY BLVD AND DUBLIN STREET. ORD. 22/029

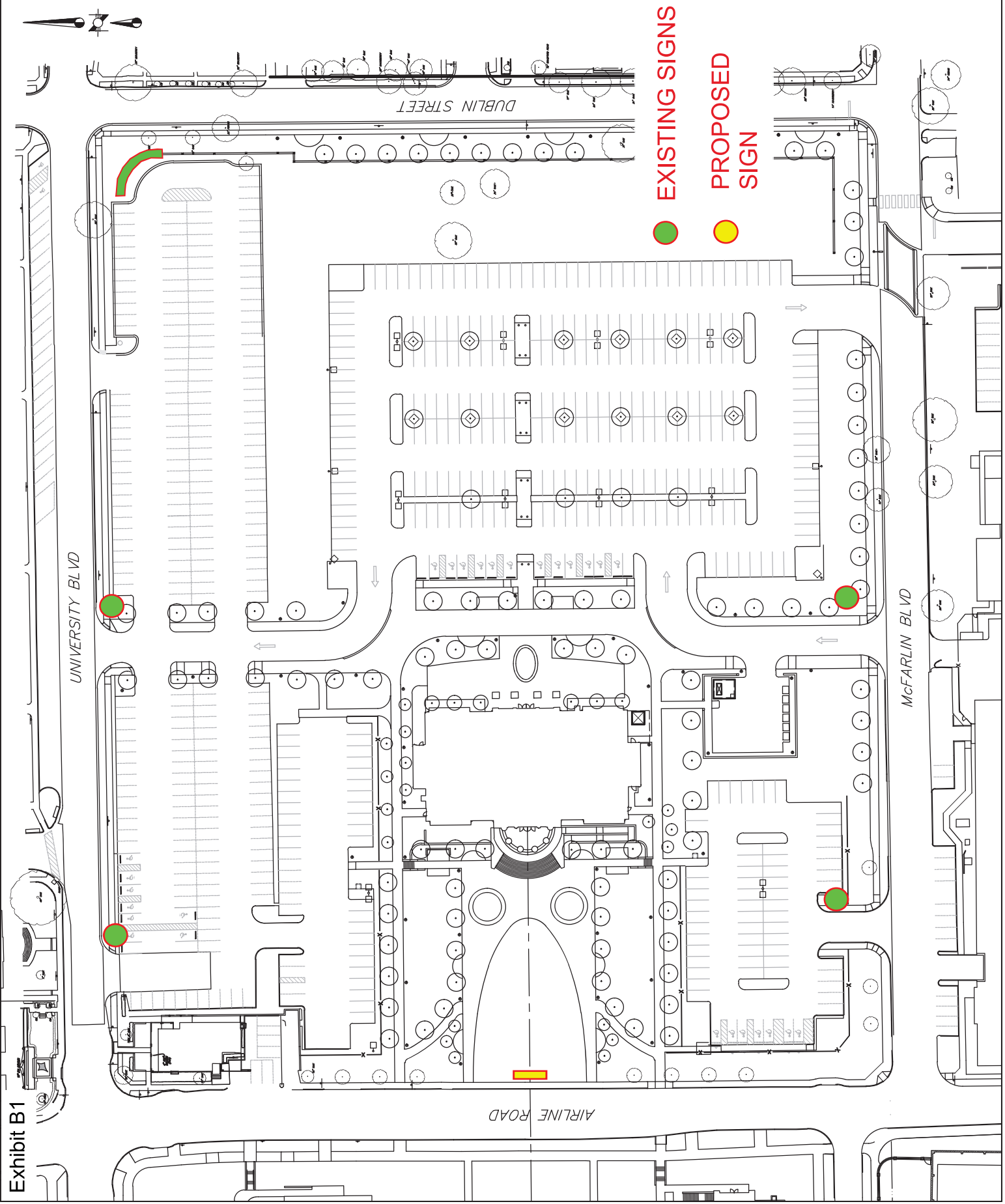
## Proposed:

- ㉔ MONUMENT SIGN LOCATED ON THE EAST SIDE OF AIRLINE ROAD BETWEEN McFARLIN BLVD AND UNIVERSITY BLVD  
Ordinance TBD 11/07/2023
- ㉕ FLAG AND FLAG POLE LOCATED NEAR THE NORTHWEST INTERSECTION OF US HIGHWAY 75 AND MOCKINGBIRD LANE  
Ordinance TBD 11/07/2023



MOODY HALL MONUMENT SIGN  
SPECIAL SIGN DISTRICT  
SOUTHERN METHODIST UNIVERSITY

RLG CONSULTING ENGINEERS  
12001 N. CENTRAL EXPRESSWAY #300 DALLAS, TX 75243  
WWW.RLGINC.COM TBP E FIRM REG. F-493

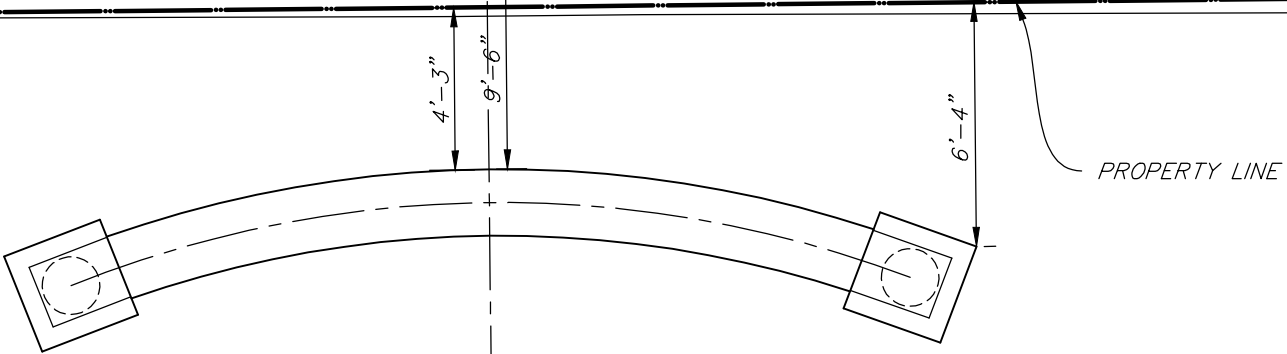




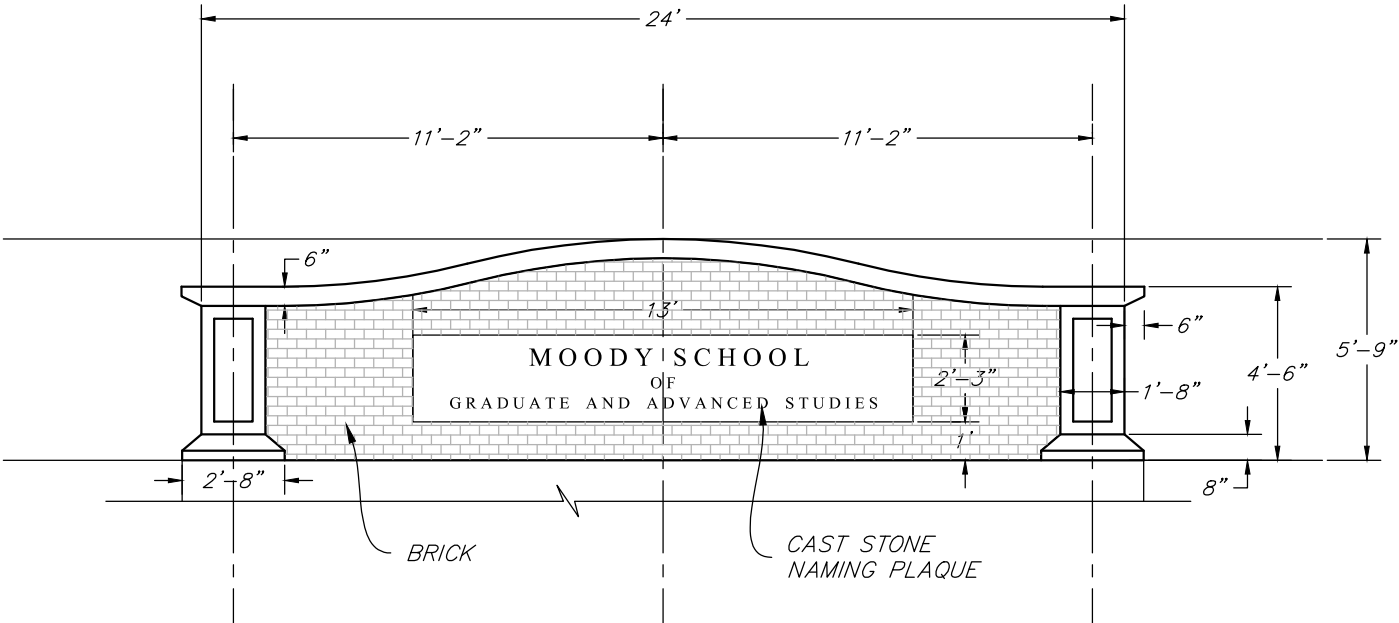
EXIST SIDEWALK

AIRLINE ROAD

EXIST SIDEWALK



PLAN VIEW



ELEVATION



RLG CONSULTING ENGINEERS  
12001 N. CENTRAL EXPRESSWAY #300 DALLAS, TX 75243  
WWW.RLGINC.COM TBPE FIRM REG. F-493

MOODY HALL MONUMENT DETAIL  
SPECIAL SIGN DISTRICT  
SOUTHERN METHODIST UNIVERSITY

AUGUST 28, 2023

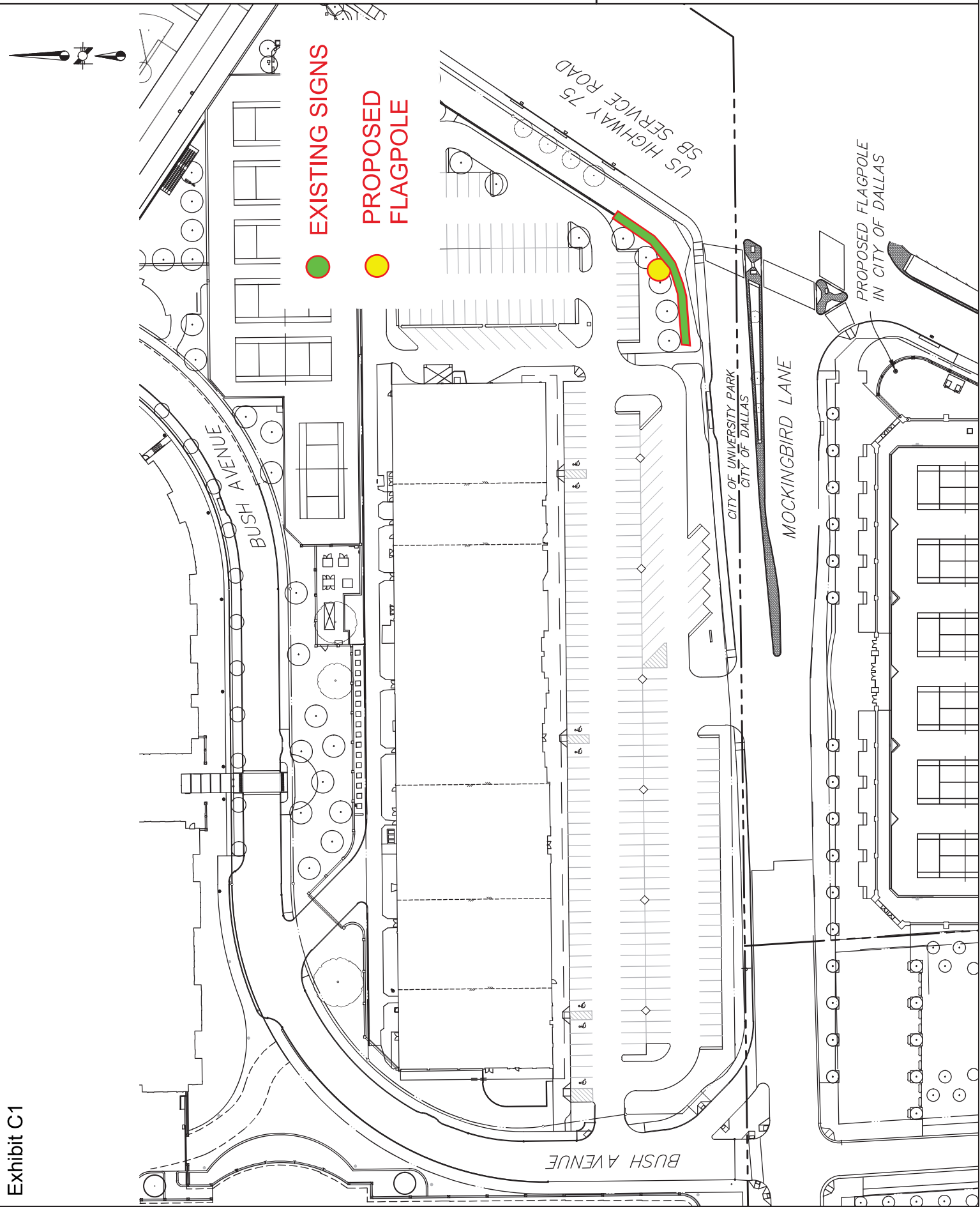




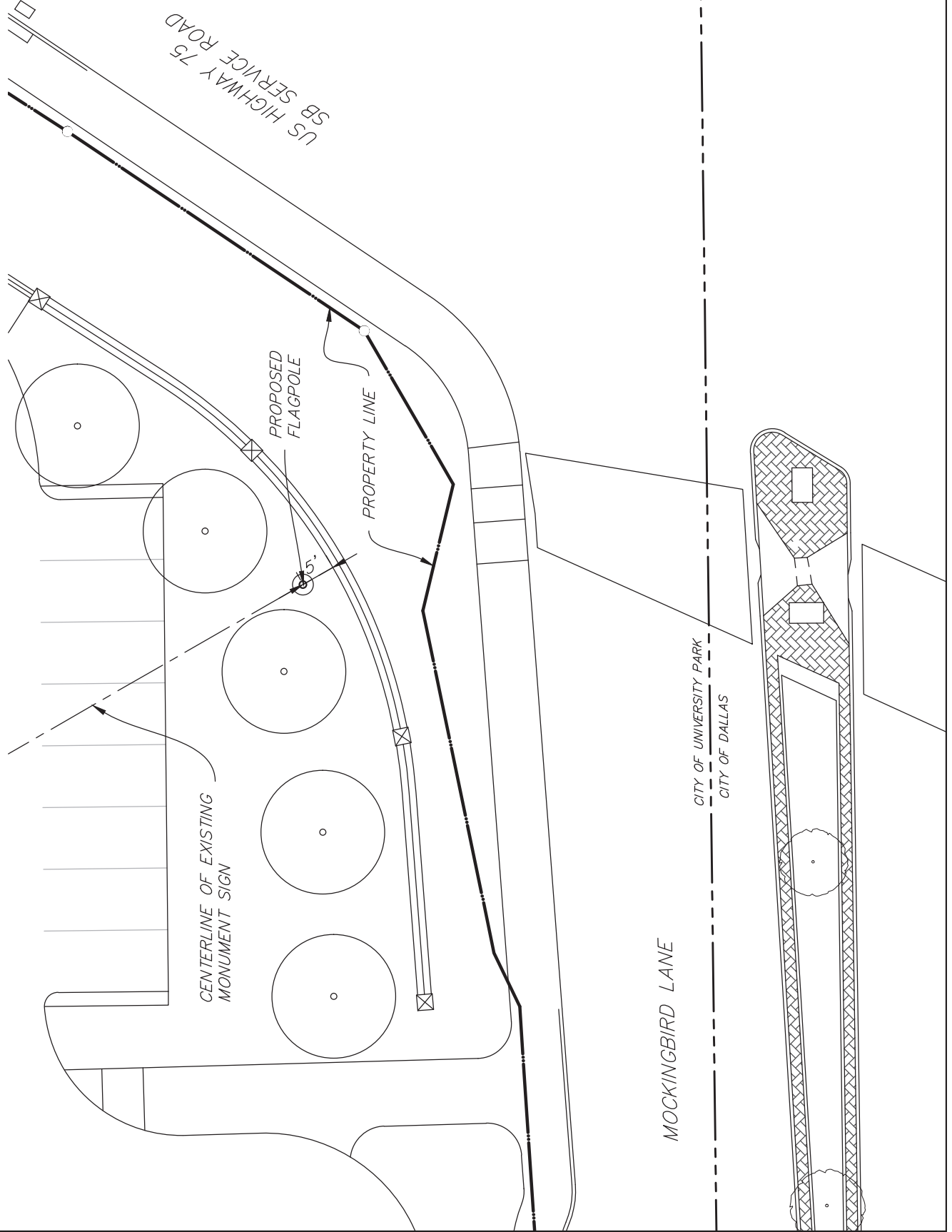


MOCKINGBIRD LANE FLAGPOLE SITE PLAN

RLG CONSULTING ENGINEERS  
12001 N. CENTRAL EXPRESSWAY #300 DALLAS, TX 75243  
WWW.RLGINC.COM TBP E FIRM REG. F-493



MOCKINGBIRD LANE FLAGPOLE DETAIL



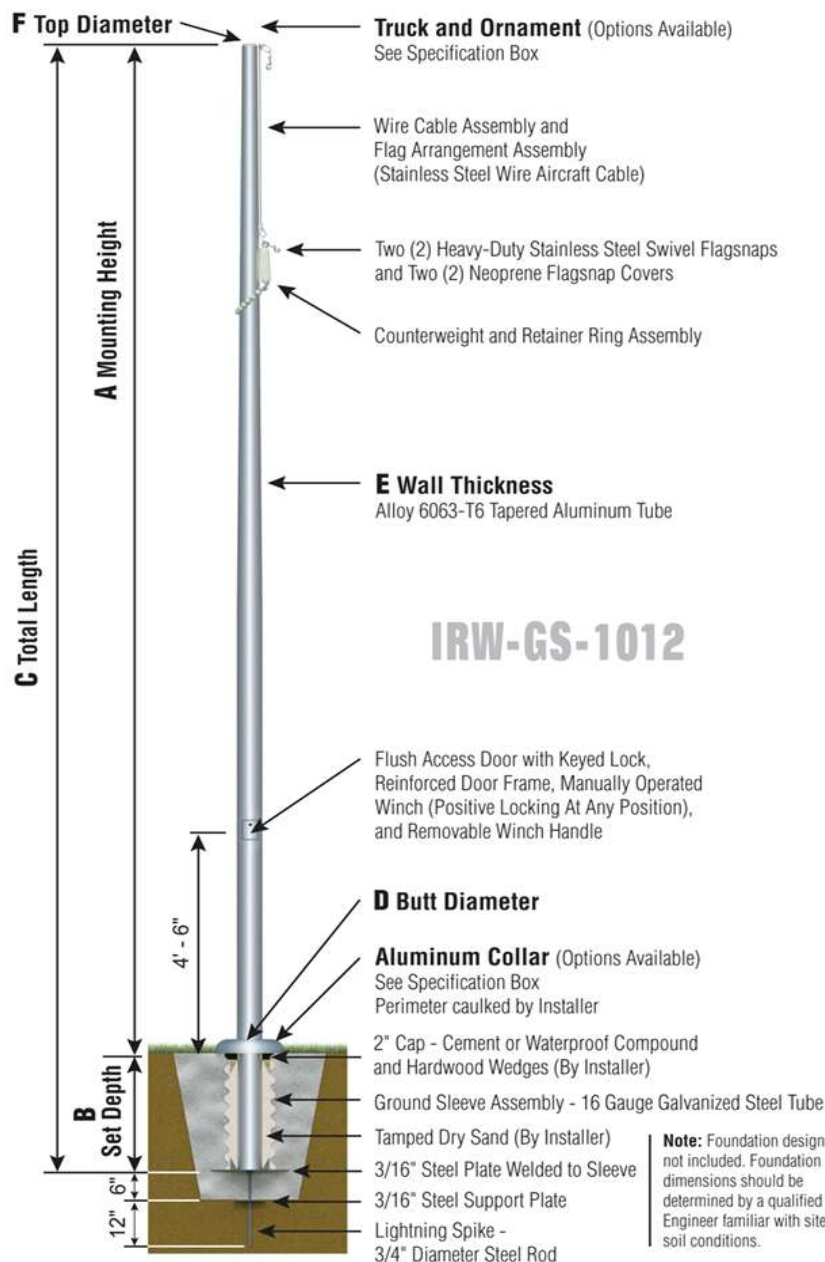


## Independence Series

IRW - Internal with Winch

Wire Halyard

Ground Set Installation



Customer Name: SMU

Dealer: Mockin

Qty: 2

Project:

Location: Mockingbird & I75

Notes:

IRW70F23G-TAZ-O0G-C2N-FSA

# IRW70F23

# - SAT



**TRK-9800-58**

Int. Revolving Truck  
Sealed Bearings



**BAL-1258-GLD**

HD Gold Anodized  
Aluminum Ball



**COL1-A12S**

FC-11 Spun Alum  
1-Piece



**SAT**

Satin Finish



**IRW - WINCH**

Reinforced Welded  
Door Frame

### Specifications

A. Mounting Height: 70'

B. Set Depth: 7'-0"

C. Total Length: 77'-0"

D. Butt Diameter: 12"

E. Wall Thickness: .250"

F. Top Diameter: 4"

Flagpole Sections: 3

Shaft Weight: 781 lbs.

Hardware Weight: 53 lbs.

Ground Sleeve Weight: 104 lbs.

\* Max Flag Size: 12' x 18'

\* Max Wind Speed w/Nylon Flag: 109 mph

\* Max Wind Speed No Flag: 145 mph

\* Wind Speed Specifications from  
ANSI/NAAMM FP 1001-07



Exhibit C4

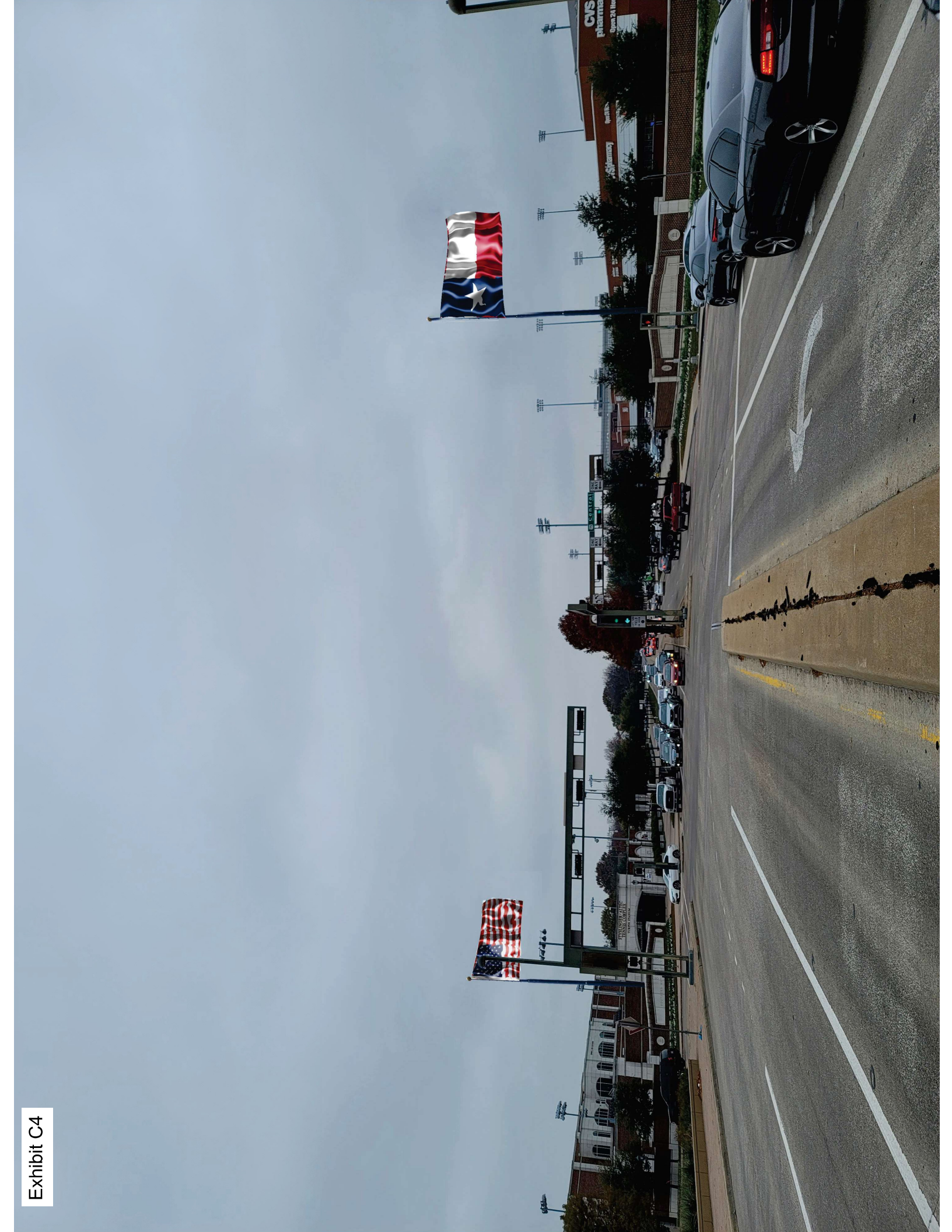




Exhibit C5

