
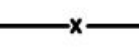
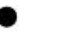
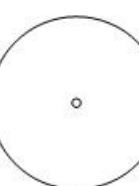


LEGEND

-  TENNIS COURT LIGHTS (REF LIGHTING PLAN)
-  12' CHAIN LINK FENCE W/WIND SCREEN
-  CAMPUS POLE LIGHT
-  PROPOSED TREE

LAND USE

6 TENNIS COURTS WITH LIGHTS.
TENNIS COURTS WILL BE AVAILABLE
FOR USE BY THE PUBLIC WHEN NOT IN
USE BY THE UNIVERSITY. LIGHTS
WILL OPERATE ON A MANUAL TIMER
DURING DUSK TO DAWN HOURS.



RLG RAYMOND L. GOODSON, JR., INC.
CONSULTING ENGINEERS
5445 LA SIERRA DRIVE, SUITE 300, LB 17
DALLAS, TEXAS 75231-4138 214/739-8100
E-MAIL: rlg@rlginc.com FIRM REG. F-493

SHEET NO.
C1.00

SITE PLAN EXHIBIT SPECIFIC USE PERMIT						
LOT 2A, BLOCK 1						
EAST UNIVERSITY PLACE ADDITION						
SOUTHERN METHODIST UNIVERSITY						
CITY OF UNIVERSITY PARK, TEXAS						
DESIGN	DRAWN	DATE	SCALE	NOTES	FILE	NO.
RLG	RLG	09-25-13	1"=20'	ZONING	11	353
JOB NO.	11-353	E-FILE		DWG. NO.		



Calculation Summary							
Label	CalcType	Units	Avg	Max	Min	Avg/Min	Max/Min
CalcPts	IlIuminance	Fc	4.53	55.4	0.0	N.A.	N.A.
COURT #1	IlIuminance	Fc	38.37	48.1	31.5	1.22	1.53
COURT #2	IlIuminance	Fc	41.15	47.4	32.7	1.26	1.45
COURT #3	IlIuminance	Fc	35.87	49.8	23.2	1.55	2.15
COURT #4	IlIuminance	Fc	34.53	47.2	26.3	1.31	1.79
COURT #5	IlIuminance	Fc	37.42	47.9	26.2	1.43	1.83
COURT #6	IlIuminance	Fc	42.15	55.4	34.2	1.23	1.62

Symbol	Label	Qty	Arrangement	Total Lamp Lumens	Description	LLD	LDD	BF	LLF	Lum. Watts
	C1	28	SINGLE	110000	LGL10XM LLG-1M-N5	0.870	0.900	1.000	0.783	1080
	C2	4	SINGLE	110000	LGL10XM LLG-1M-N6	0.870	0.900	1.000	0.783	1080
	SB	8	SINGLE	14000	SENTRY_SWB-NS-70MH-G3	0.870	0.900	1.000	0.783	79

Recreational Tennis Courts
& Club Sports Field

Potomac Park
Southern Methodist University
University Park, Texas

Design Development

Civil - Structural



Raymond L. Goodson Jr., Inc.
Consulting Engineers

Civil - Survey - Structural - IPD
Firm Reg. #493

5445 La Sierra Dr #300
Dallas, Texas

214,739,8100
214 739,8354 Tax

Architect

Hanfeld Hoffer Stanford
200 Bailey Ave #200
Fort Worth, Texas
76107

817.921.5928
817.302.0682 fax

Landscape Architect

The Office of Christopher Miller
1412 Gar. Sabe Dr
Dallas, Texas
75218

214.320.3754
214.320.0197 fax

Mech - Elec - Plumbing

Purdy-McGuire, Inc
17300 Dallas Pkwy #3000
Dallas, Texas
75248

972.230.5357
972.230.5231 for

Seal

PRELIMINARY
THIS DOCUMENT IS RELEASED FOR
THE PURPOSES OF PERM
DEVELOPMENT UNDER THE AUTHORITY
OF DANIEL C. THOMAS, PE 84334
RELEASED ON: DECEMBER 2, 2015 IT
IS NOT TO BE USED FOR
ACTION, BRIDGING PERMITS &
ETC.

Job
11

Date _____

10
D = 1

Scal

Revisions

1999年 第1期 总第10期

출판권은 본 저작물의 출판권과 관련된 모든 권리를 포함한다.

11월 2주, 12월 1주, 12월 2주

0000-0000-0000-0000 © 2014

DOI: 10.1002/for

© 1996 Blackwell Science Ltd, *Journal of Internal Medicine* 240: 399–405

[illegible]

DOI: 10.1002/for

Title

Fig. 2

5

II

.....

D

L

LIGHTING FIXTURE SCHEDULE					
TYPE	DESCRIPTION	REF. & CAT. NO.	LAMPS	VOLTS	REMARKS
C1	SPORTS LIGHTING FLOODLIGHT WITH DIE CAST ALUMINUM HOUSING AND HINGED TEMPERED GLASS LENS ON 22" ROUND TAPERED STEEL POLE	DAYWHITE RGL100P-ST-BK-LG-1M-NS ON 22" LYTE POLE 405-7015-22-TLS-STD PWD CT W/11 CRT-02-STD PWD CT FOR 4 FIXTURE SET UP	1000W PULSE START METAL HALIDE	480	
C2	SPORTS LIGHTING FLOODLIGHT WITH DIE CAST ALUMINUM HOUSING AND HINGED TEMPERED GLASS LENS ON 22" ROUND TAPERED STEEL POLE	DAYWHITE RGL100P-ST-BK-LG-1M-NS ON 22" LYTE POLE 405-7015-22-TLS-STD PWD CT W/11 CRT-02-STD PWD CT FOR 4 FIXTURE SET UP	1000W PULSE START METAL HALIDE	480	
SD	AREA FLOOD LIGHT FIXTURE WITH DIE CAST HEAVY DUTY ALUMINUM HOUSING, POLYESTER POWDER COAT PAINTED FINISH, HIGH IMPACT UV RESISTANT ACRYLIC LENS, ON 15" TALL CONCRETE CAST ALUMINUM POLE WITH PAINTED BLACK FINISH	SENTRY ELECTRIC RSWB-CB-NS-700M-PS-BB-MED-HORF-CUR-TLR-BK WITH POLE RSL-V02-10F-1117-BK	700W PULSE START METAL HALIDE	208	
NOTES:					

1 LIGHTING FIXTURE SCHEDULE

SCALE: 1"=20'-0"

Overview

LGL

League Lighter™ Floodlight



The League Lighter is the choice for lighting recreational or competitive facilities requiring an efficient and economical luminaire.

Accessories (Order Separately)

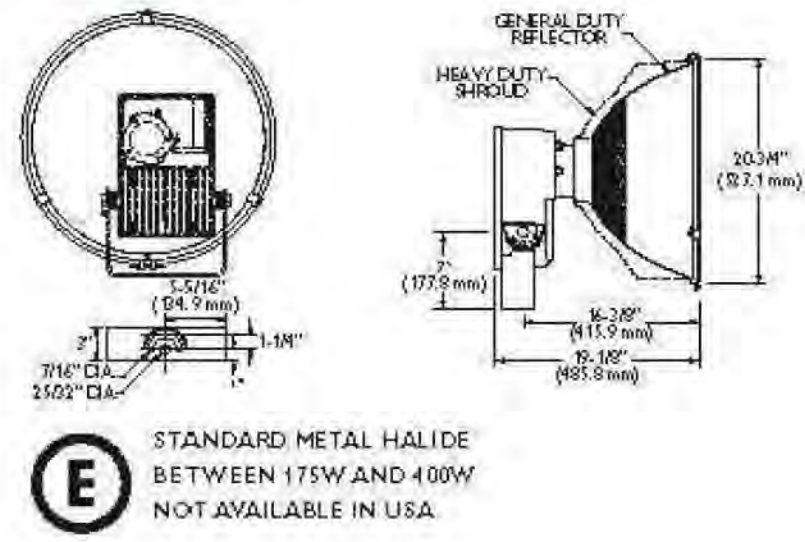
- LLP11 - Post Top Style for League Lighter
- VLL - Vane Style League Lighter
- VLL - Vane for League Lighter
- LLCL - Concrete Lumen (Internal)
- LLCLH - Concrete Half Lumen (Internal)
- VVCL - Vane Guard League Lighter

(For additional description of floodlight accessories refer to page 555-563)

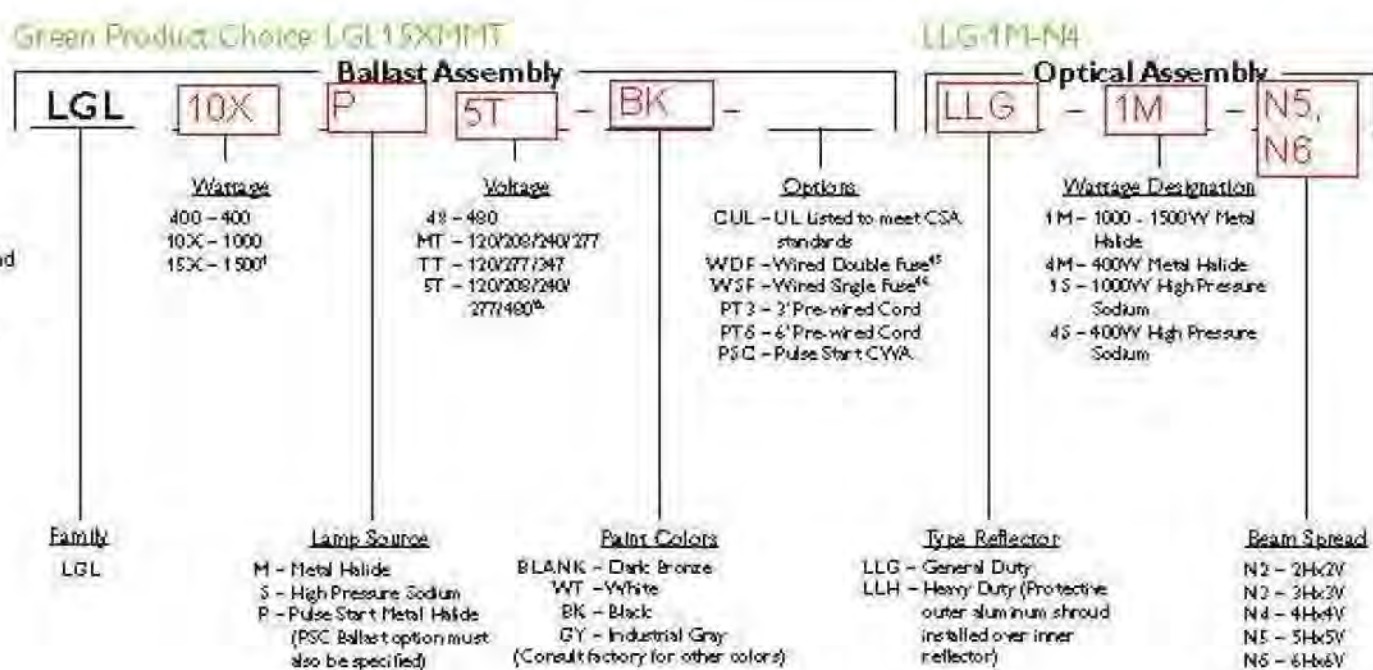
Features

- Die cast aluminum housing made up to extreme accuracy. Bay access to ballast compartment.
- Hinged tempered glass lens with heavy gauge galvanized steel frame. Door hinges downward for convenience.
- "Double Shut-2" heat sealed ballast cooler ballast operation and longer component life.
- Lump stabilizer grip lamp envelope centering and stabilizing lamp.
- Rugged reflector constructed of heavy gauge precision spun and anodized aluminum.
- NEPSI Type 2, 3, 4, 5 and 6 beam patterns.
- Polyester powder finish on housing & concrete and UV resistant.
- Certified to meet UL 1598 standards for wet locations and 25°C ambient.
- EPA = 2.4 FT/L.
- Approximate weight 61-68 lbs.

Dimensions



STANDARD METAL HALIDE BETWEEN 175W AND 400W NOT AVAILABLE IN USA.



General Notes

Model line lamp only. All options are factory installed. All accessories are field installed.

Footnotes

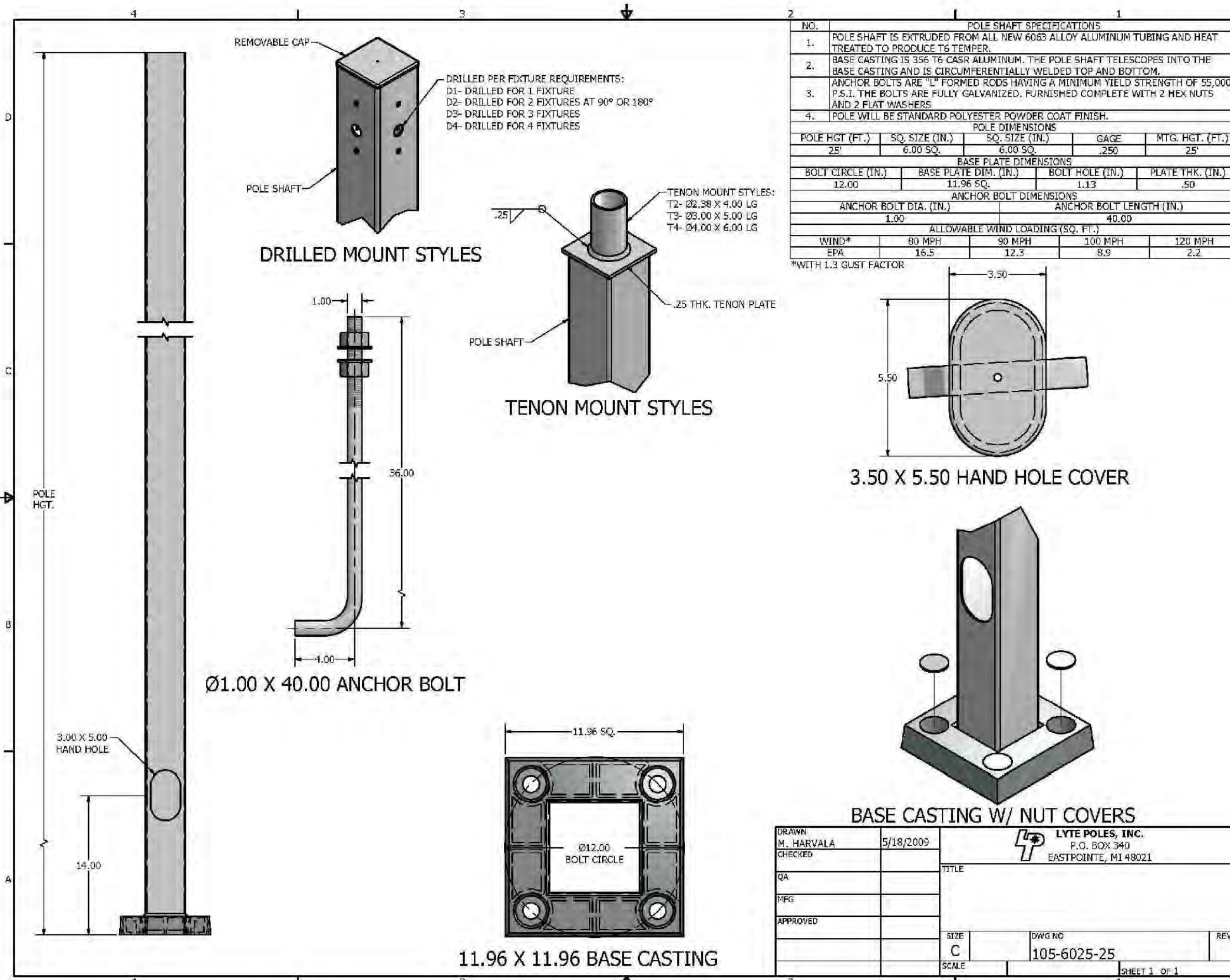
- *Metal Halide only.
- *Use with 200, 240 and 480 volt.
- *Use with 120/277 and 347 volt.
- *Available in 400 or 1000 watt.

For more information concerning the LGL League Lighter Floodlight, consult specification sheet number RL-4100 at www.daybrite.com. Consult the website and other product literature for warranty information. Data subject to change without notice.

812 Philips Day-Brite Solutions Volume 7

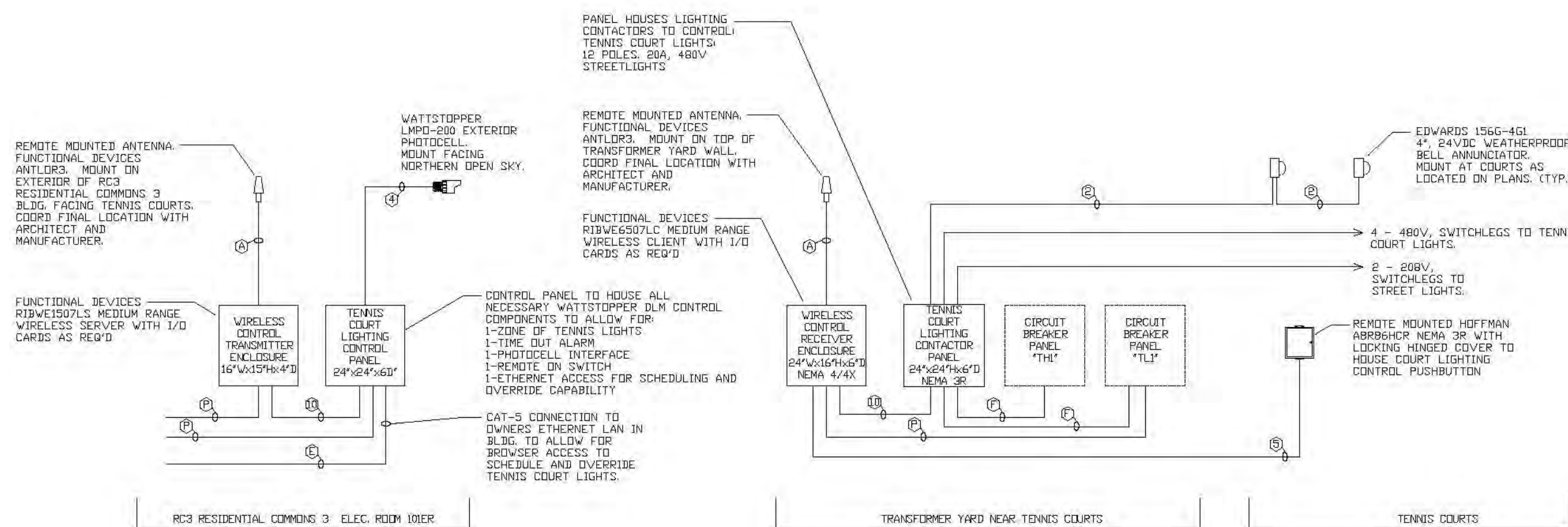
3 C1, C2 LIGHTING FIXTURE CUT SHEET

SCALE: NOT TO SCALE



2 LIGHT POLE DETAIL

SCALE: NOT TO SCALE



- KEYED NOTES:
- FUNCTIONAL DEVICES (ANTENNA, 30" ANTENNA CABLE, ENCLURE).
 - CAT-5 CONNECTION TO OWNER'S LAN.
 - UNSWITCHED FEED CIRCUITS TO LIGHTING CONTROLS.
 - UNSWITCHED 120V CIRCUIT FOR CONTROL SYSTEM BOARD.
 - 24V/48V STRANDED CONDUCTORS FOR 24VDC CONTROL, 6" REMOTE BELLS.
 - 18V/24V STRANDED CONDUCTORS FOR 24V PHOTOCELL.
 - 18V/24V STRANDED CONDUCTORS FOR 24V CONTROL.

THEORY OF OPERATION:
ALL TENNIS COURT LIGHTS ARE WITHIN ONE CONTROL ZONE. LIGHTS ARE MANUALLY ACTIVATED USING PUSHBUTTON IN REMOTE ENCLURE.
PUSHBUTTON MAY BE USED TO TURN ON LIGHTS WHEN IT IS DARK (ADJUSTABLE) AND WITHIN AN ALLOWABLE TIME FRAME AS SCHEDULED IN CONTROL UNIT.
AFTER LIGHTS ARE TURNED ON, THEY WILL REMAIN ON FOR 1 HOUR (ADJUSTABLE) AND THEN THE ALARM BELLS WILL INDICATELY SOUND.
IF THE BUTTON IS NOT PRESSED AGAIN WITHIN 5 MINUTES, THE LIGHTS WILL TURN OFF. IF BUTTON IS PRESSED, THE 1 HOUR ON-DURATION CYCLE WILL REPEAT.
ALLOWABLE TIME SCHEDULE MAY BE REMOTELY ADJUSTED VIA ETHERNET ACCESS TO CONTROLLER.
ON AND OFF TIMES MAY BE REMOTELY ADJUSTED AS NECESSARY TO ACCOMMODATE DESIRED SCHEDULE CHANGES.

4 TENNIS COURT LIGHTING CONTROL SYSTEM ONE-LINE DIAGRAM

SCALE: NOT TO SCALE

Recreational Tennis Courts & Club Sports Field

Potomac Park

Southern Methodist University

University Park, Texas

Civil - Structural



Raymond L. Goodson Jr., Inc.
Consulting Engineers
Civil - Survey - Structural - IPD
Firm Reg: F-493

5445 Le Sierra Dr #300
Dallas, Texas
75231-4138
214.739.8100
214.739.6354 fax

Architect

Hanfield Hoffer Stanford
200 Bailey Ave #200
Fort Worth, Texas
76107
817.821.5928
817.302.0692 fax

Landscape Architect

The Office of Christopher Miller
1412 San Sabo Dr
Dallas, Texas
75218
214.320.3764
214.320.0197 fax

Mech - Elec - Plumbing

Purdy-McGuire, Inc.
17300 Dallas Pkwy #3000
Dallas, Texas
75248
972.239.6357
972.239.5231 fax

Seal

PRELIMINARY
THIS DOCUMENT IS RELEASED FOR THE PURPOSES OF DESIGN DEVELOPMENT ONLY. IT IS NOT TO BE USED FOR CONSTRUCTION. NO PART OF THIS DOCUMENT SHALL BE REPRODUCED OR TRANSMITTED IN ANY FORM OR BY ANY MEANS, ELECTRONIC OR MECHANICAL, WITHOUT THE WRITTEN PERMISSION OF PURDY-McGUIRE, INC.

Job

11353

Date

10/16/13

Scale

Revisions

Title

Purdy - McGuire
Mechanical - Electrical Engineers
17300 North Dallas Parkway
Suite 3000
Dallas, Texas 75248-1147
Firm Registration # F-1511
Tel: 972/239-5357
Fax: 972/239-5231
www.purdy-mcguire.com

© 2007

PMJ JOB NO. 13565/000
PROJECT MGR. DEREK CLEMENTS

THIS DRAWING SHALL NOT BE REPRODUCED FOR ANY PROJECT OTHER THAN THE PROJECT NOTED IN THE TITLE BLOCK WITHOUT THE WRITTEN CONSENT OF PURDY-McGUIRE, INC. DALLAS, TX

E2.02