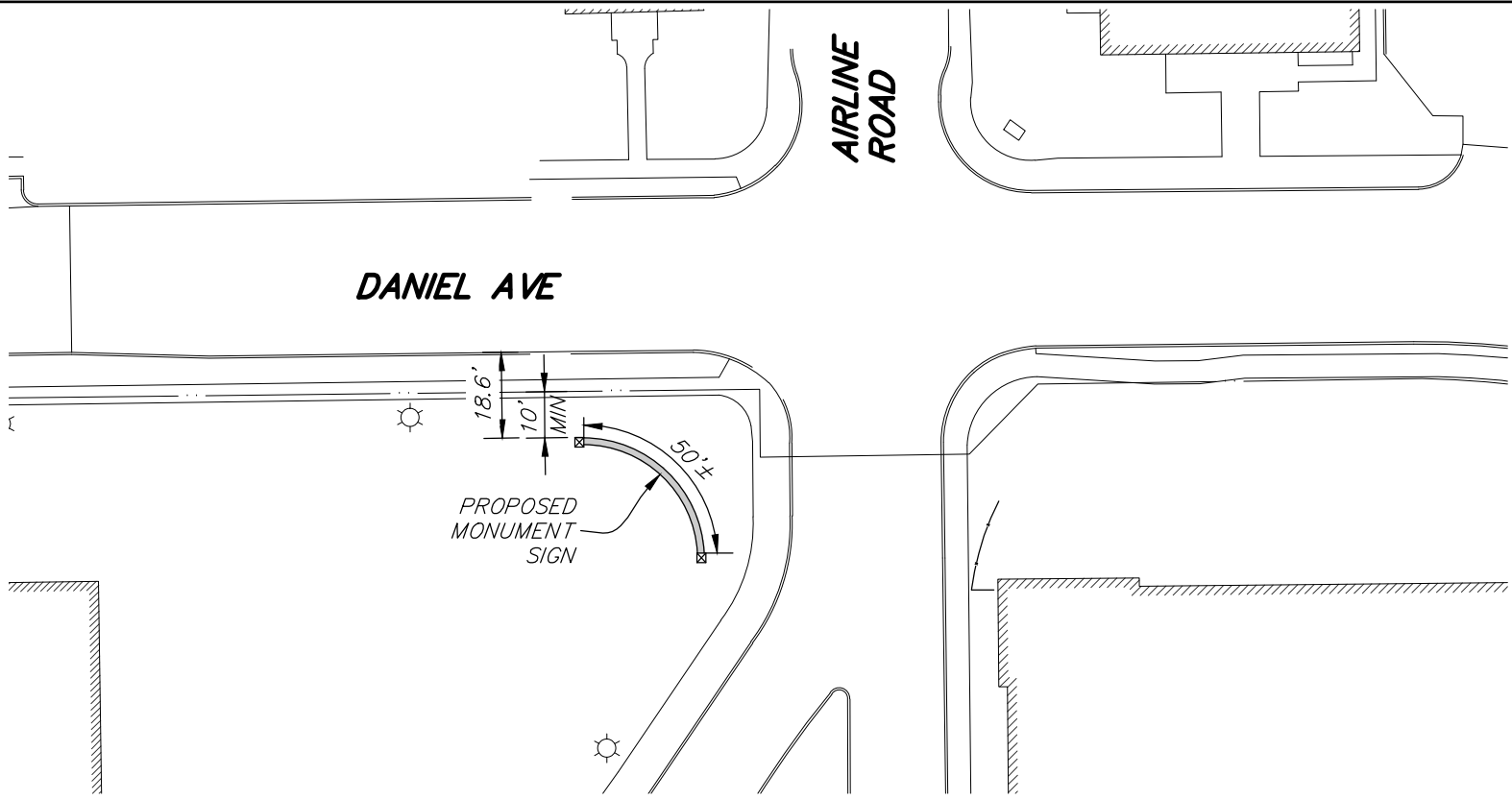
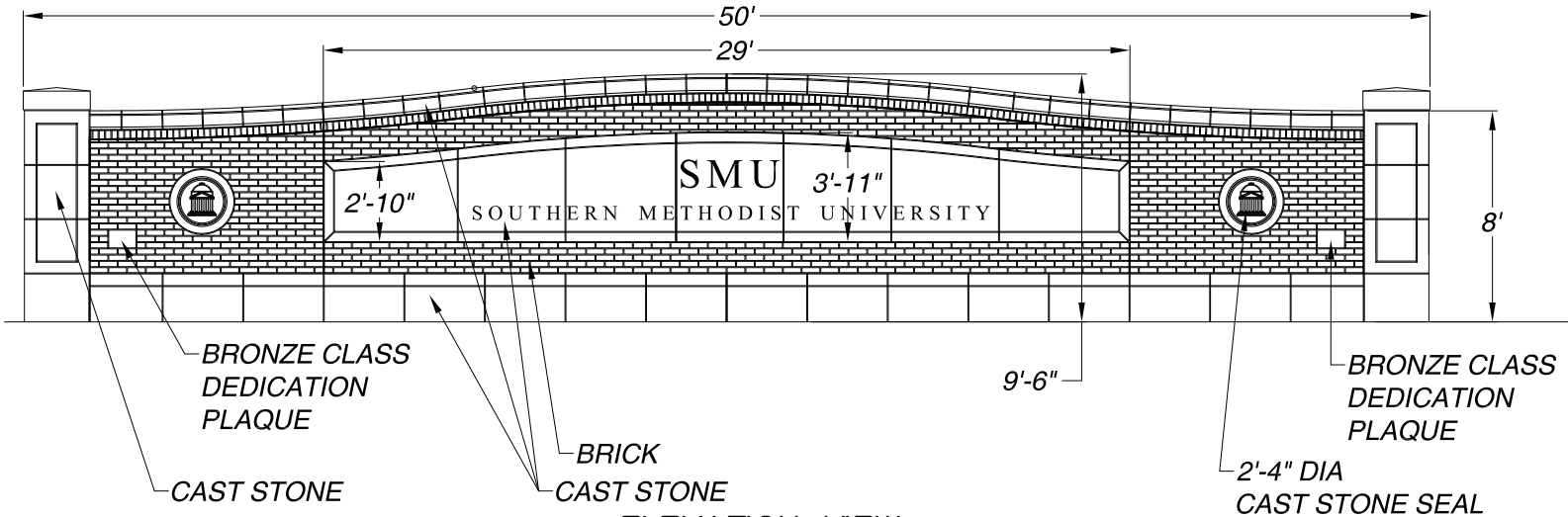


EXHIBIT "1"



PLAN VIEW

NTS



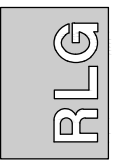
ELEVATION VIEW

NTS

SPECIAL SIGN DISTRICT
SOUTHERN METHODIST UNIVERSITY

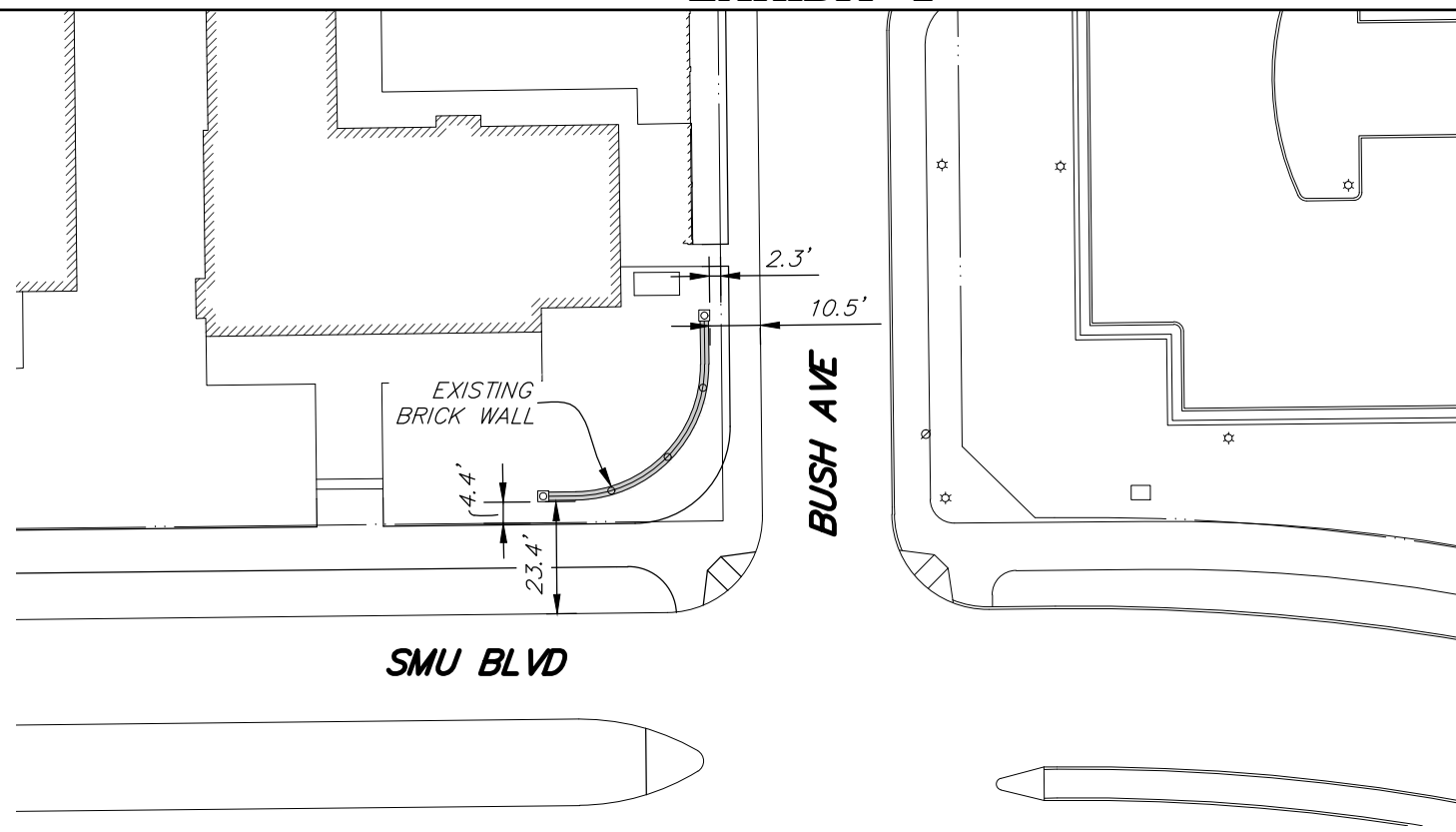
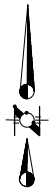
MARCH 17, 2014

RAYMOND L. GOODSON JR., INC.
 CONSULTING ENGINEERS
 5445 LA SIERRA DRIVE, SUITE 300, LB 17
 DALLAS, TEXAS 75231-4138 214/739-8100
 E-MAIL: rlg@rlginc.com FIRM REG: F-493



① - SOUTHWEST CORNER
 OF AIRLINE ROAD
 AND DANIEL AVE

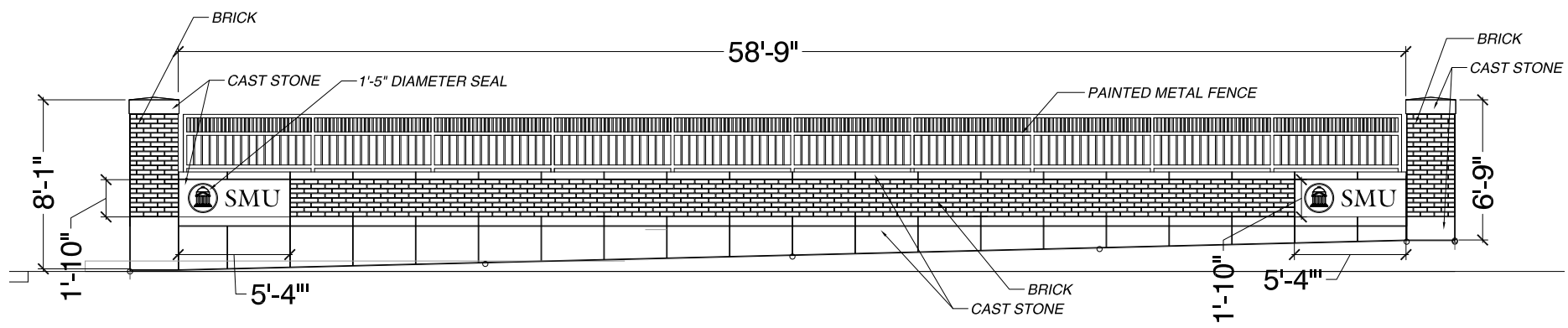
EXHIBIT "2"



SMU BLVD

BUSH AVE

PLAN VIEW
NTS



ELEVATION VIEW
NTS

② - NORTHWEST CORNER
OF BUSH AVENUE AND
SMU BOULEVARD

RAYMOND L. GOODSON JR., INC.
CONSULTING ENGINEERS
5445 LA SIERRA DRIVE, SUITE 300, LB 17
DALLAS, TEXAS 75231-4138 214/739-8100
E-MAIL: rlg@rlginc.com FIRM REG: F-493

SPECIAL SIGN DISTRICT
SOUTHERN METHODIST UNIVERSITY

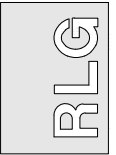


MARCH 17, 2014



*NORTHWEST CORNER OF BUSH AVENUE
AND SMU BOULEVARD*

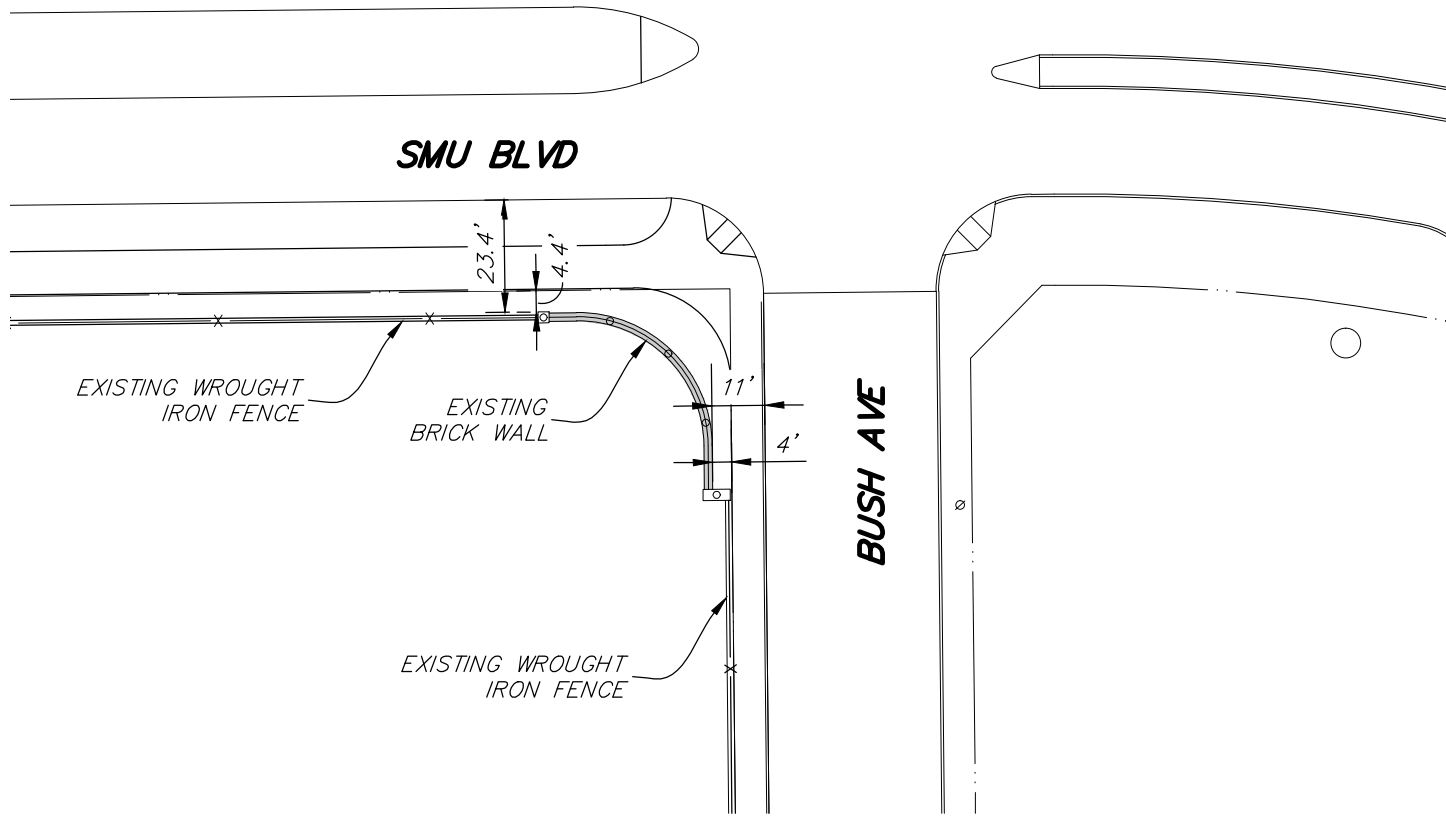
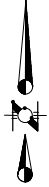
RAYMOND L. GOODSON JR., INC.
CONSULTING ENGINEERS
5445 LA SIERRA DRIVE, SUITE 300, LB 17
DALLAS, TEXAS 75231-4138 214/739-8100
E-MAIL: rlg@rlginc.com FIRM REG: F-493



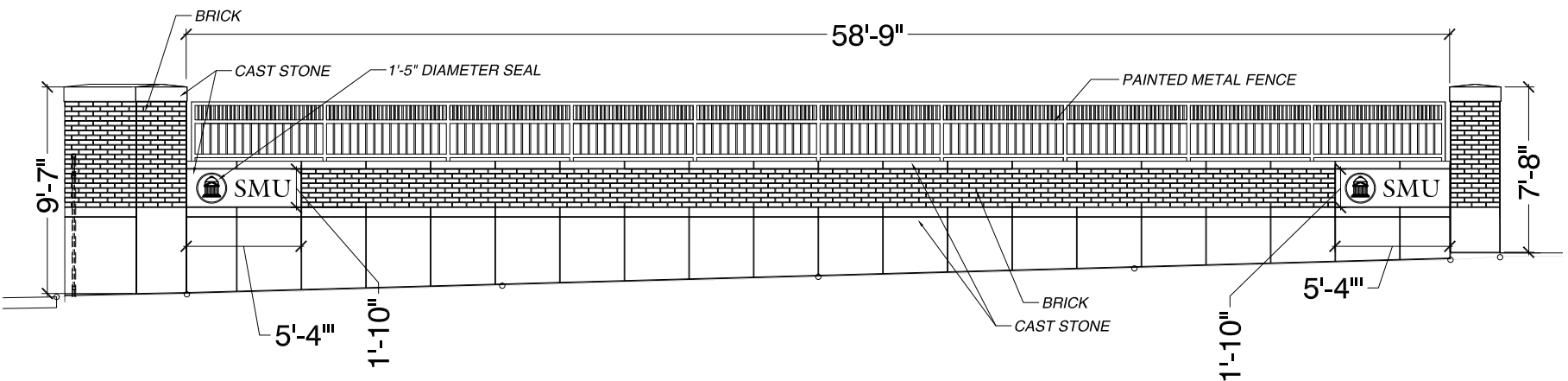
*SPECIAL SIGN DISTRICT
SOUTHERN METHODIST UNIVERSITY*

MARCH 17, 2014

EXHIBIT "3"



PLAN VIEW
NTS



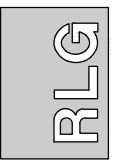
ELEVATION VIEW
NTS

③ - SOUTHWEST CORNER
OF BUSH AVENUE AND
SMU BOULEVARD

SPECIAL SIGN DISTRICT
SOUTHERN METHODIST UNIVERSITY

MARCH 17, 2014

RAYMOND L. GOODSON JR., INC.
CONSULTING ENGINEERS
5445 LA SIERRA DRIVE, SUITE 300, LB 17
DALLAS, TEXAS 75231-4138 214/739-8100
E-MAIL: rlg@rlginc.com FIRM REG: F-493





*SOUTHWEST CORNER OF BUSH AVENUE
AND SMU BOULEVARD*

**SPECIAL SIGN DISTRICT
SOUTHERN METHODIST UNIVERSITY**

RAYMOND L. GOODSON JR., INC.
CONSULTING ENGINEERS
5445 LA SIERRA DRIVE, SUITE 300, LB 17
DALLAS, TEXAS 75231-4138 214/739-8100
E-MAIL: rlg@rlginc.com FIRM REG: F-493

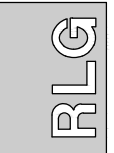
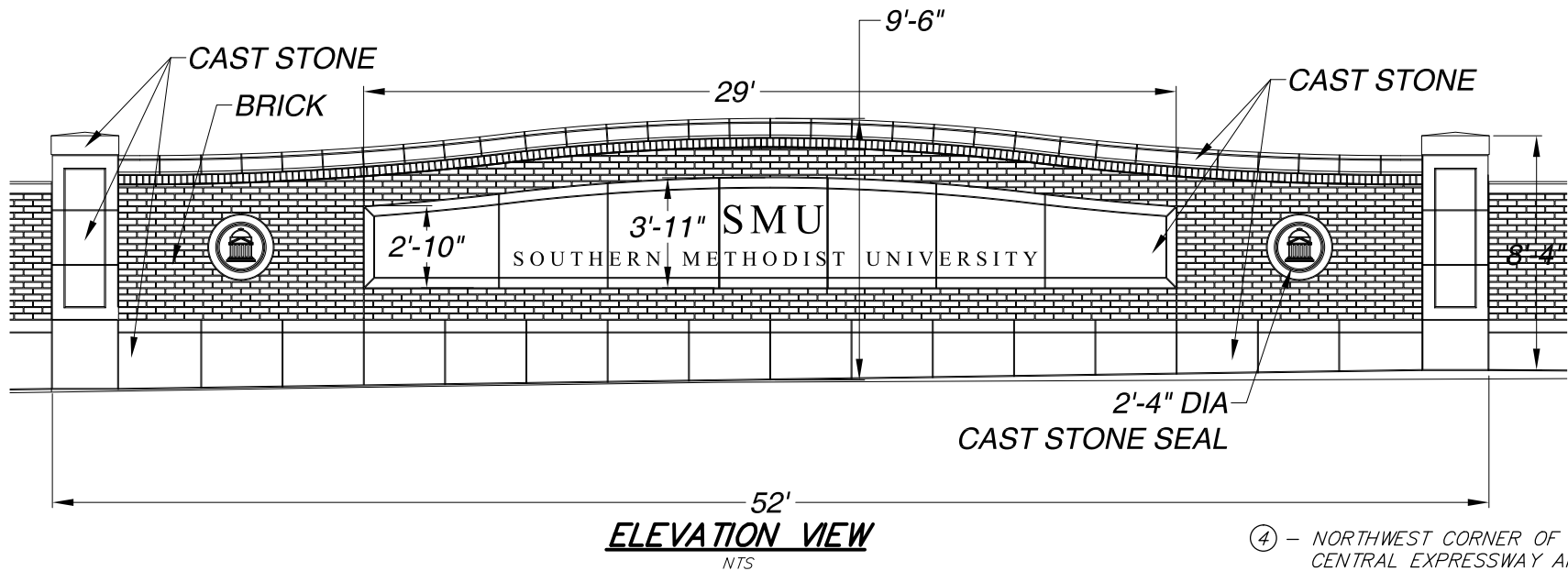
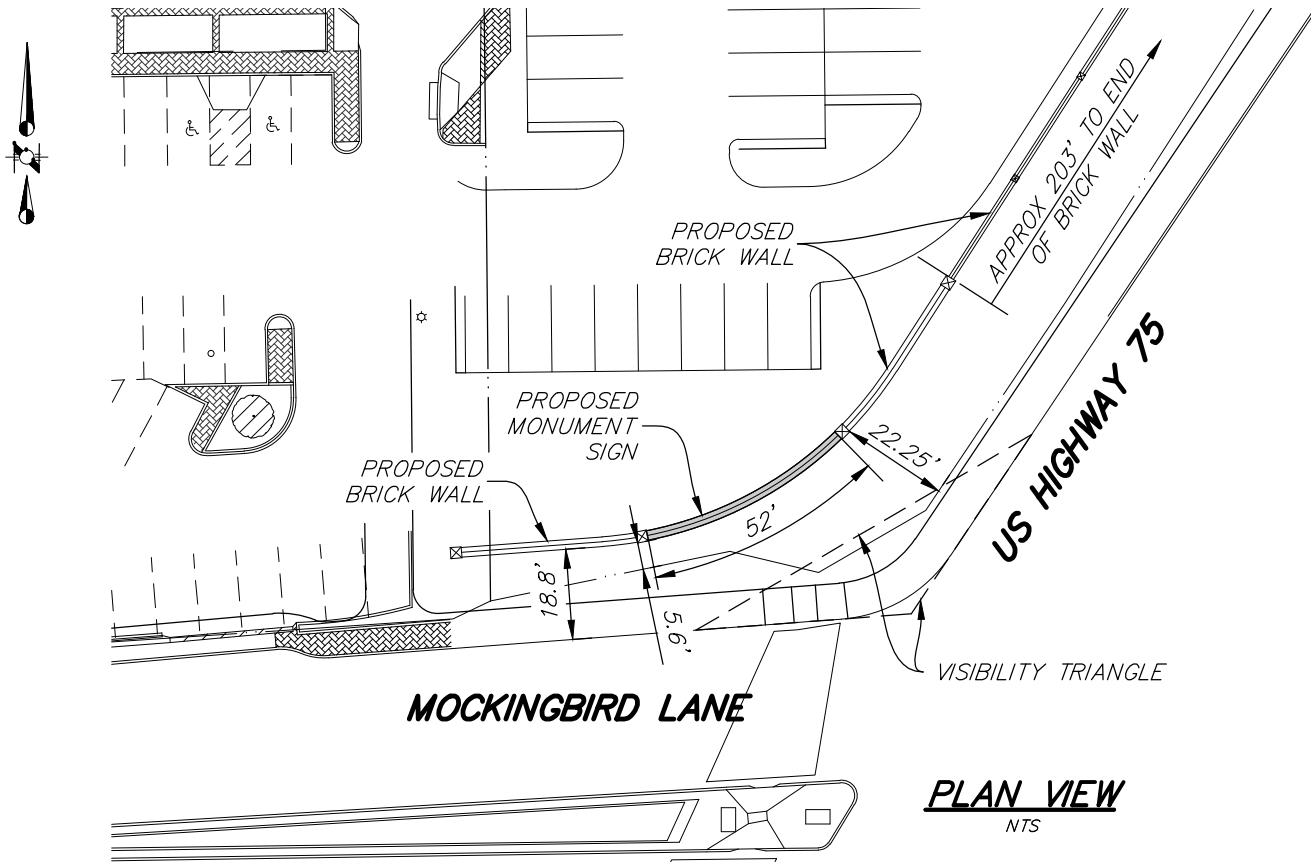


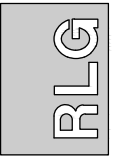
EXHIBIT "4"



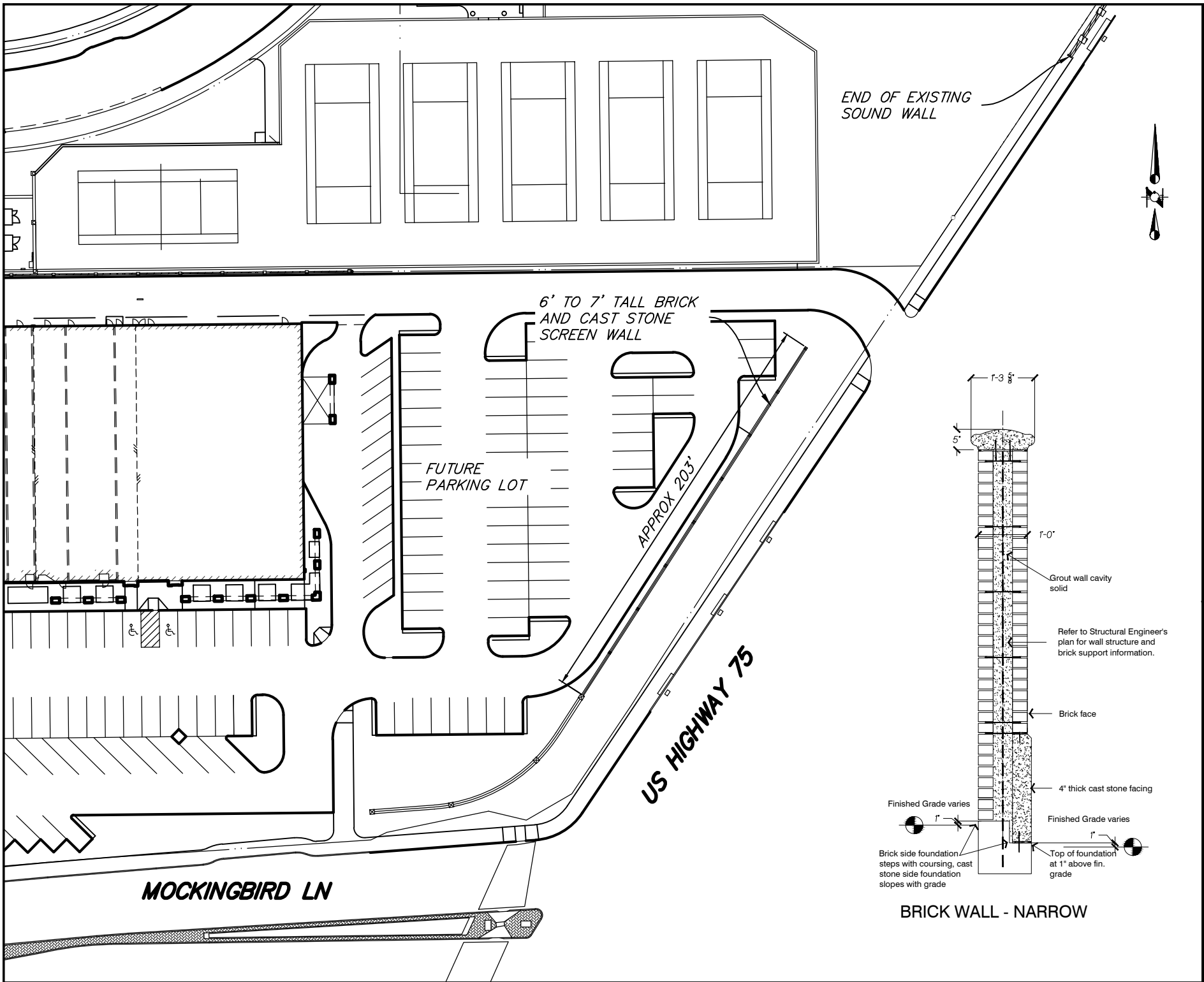
④ - NORTHWEST CORNER OF CENTRAL EXPRESSWAY AND MOCKINGBIRD LANE

SPECIAL SIGN DISTRICT
SOUTHERN METHODIST UNIVERSITY

RAYMOND L. GOODSON JR., INC.
CONSULTING ENGINEERS
5445 LA SIERRA DRIVE, SUITE 300, LB 17
DALLAS, TEXAS 75231-4138 214/739-8100
E-MAIL: rlg@rlginc.com FIRM REG: F-493



MARCH 18, 2014



END OF EXISTING SOUND WALL

6' TO 7' TALL BRICK AND CAST STONE SCREEN WALL

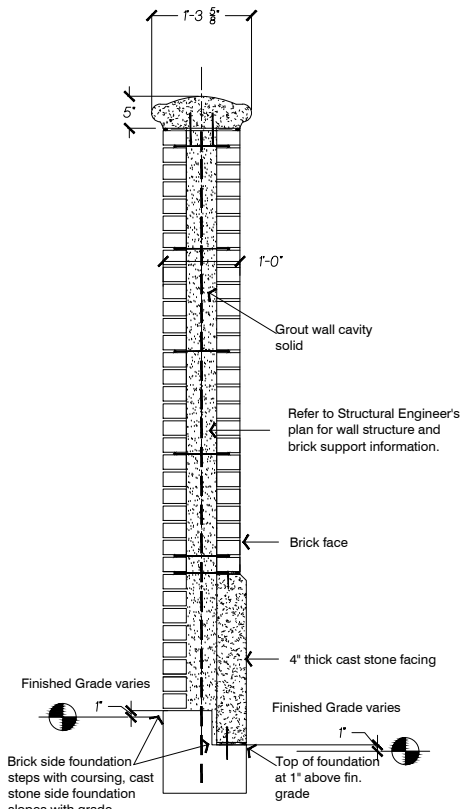
FUTURE PARKING LOT

APPROX 203'

US HIGHWAY 75

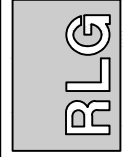
MOCKINGBIRD LN

BRICK WALL - NARROW



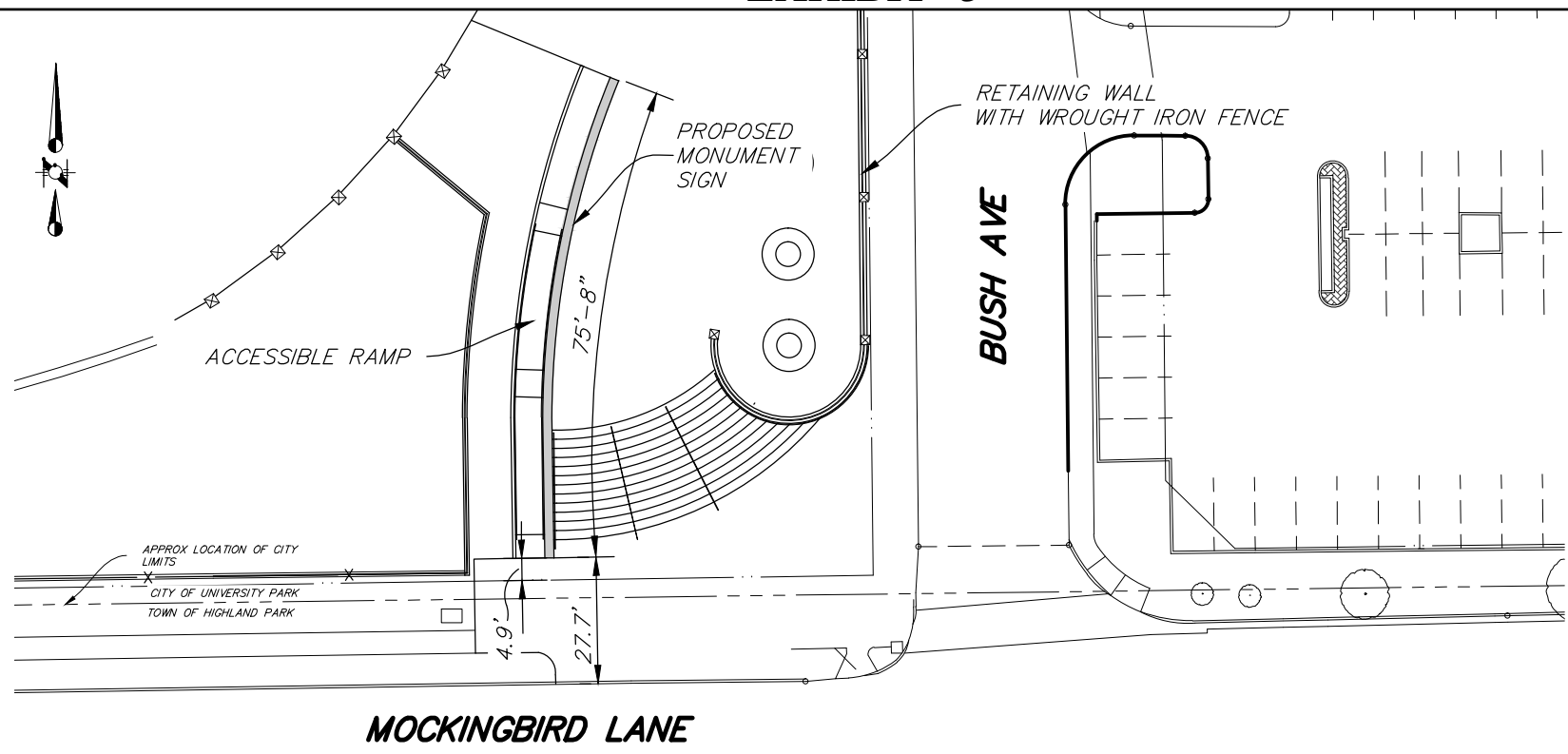
RAYMOND L. GOODSON JR., INC.
 CONSULTING ENGINEERS
 5445 LA SIERRA DRIVE, SUITE 300, LB 17
 DALLAS, TEXAS 75231-4138 214/739-8100
 E-MAIL: rig@rlginc.com FIRM REG: F-493

SPECIAL SIGN DISTRICT
 SOUTHERN METHODIST UNIVERSITY



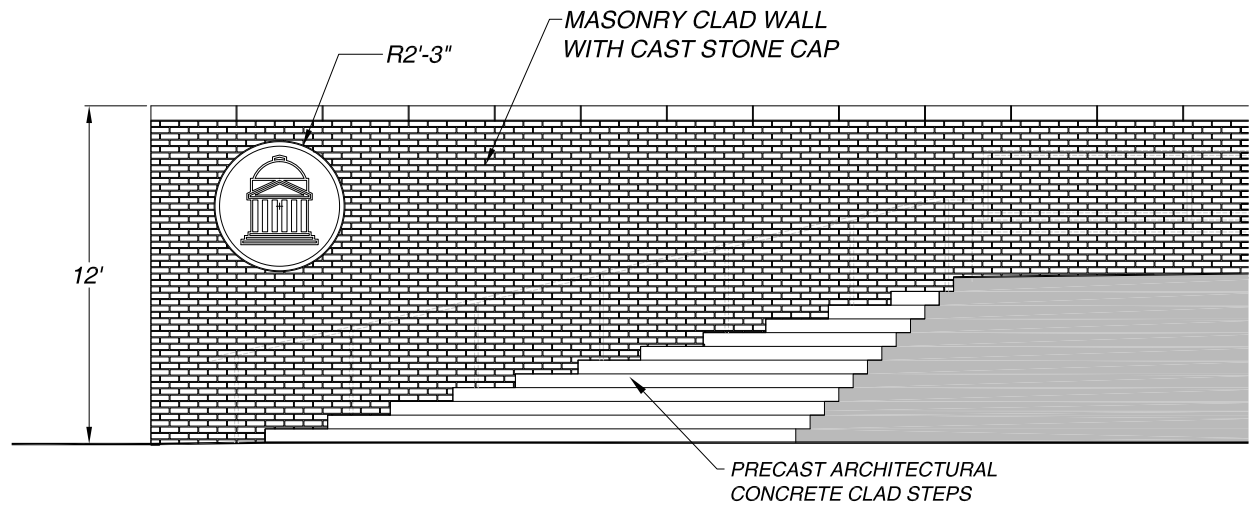
MARCH 18, 2014

EXHIBIT "5"



PLAN VIEW

NTS



ELEVATION VIEW

NTS

⑤ - NORTHWEST CORNER OF BUSH AVENUE AND MOCKINGBIRD LANE

SPECIAL SIGN DISTRICT
SOUTHERN METHODIST UNIVERSITY

MARCH 17, 2014

RAYMOND L. GOODSON JR., INC.
 CONSULTING ENGINEERS
 5445 LA SIERRA DRIVE, SUITE 300, LB 17
 DALLAS, TEXAS 75231-4138 214/739-8100
 E-MAIL: rlg@rlginc.com FIRM REG: F-493

